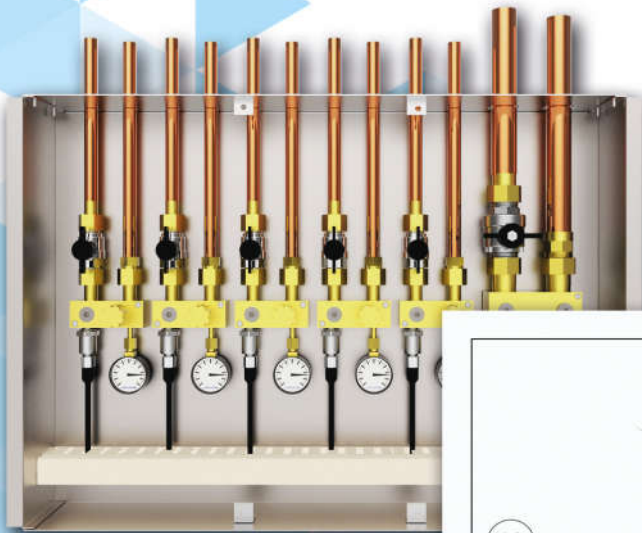
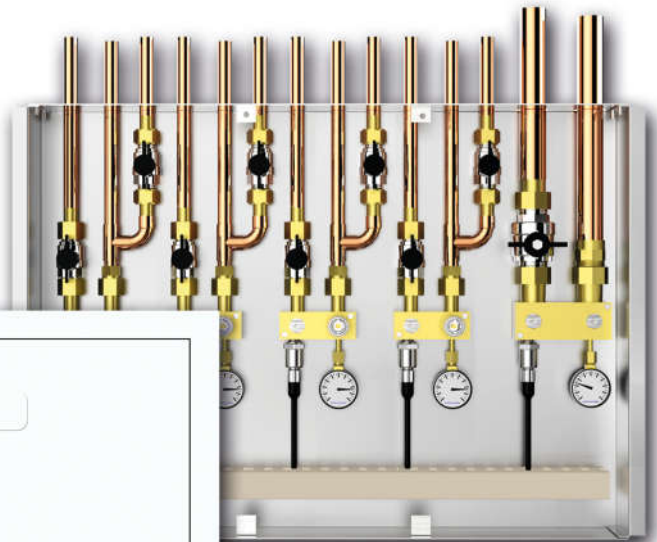


Area valve boxes "SZI"

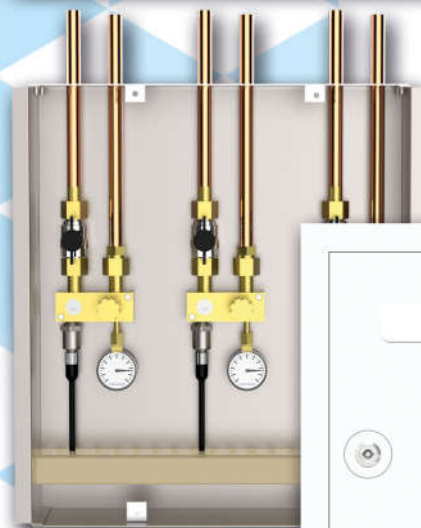
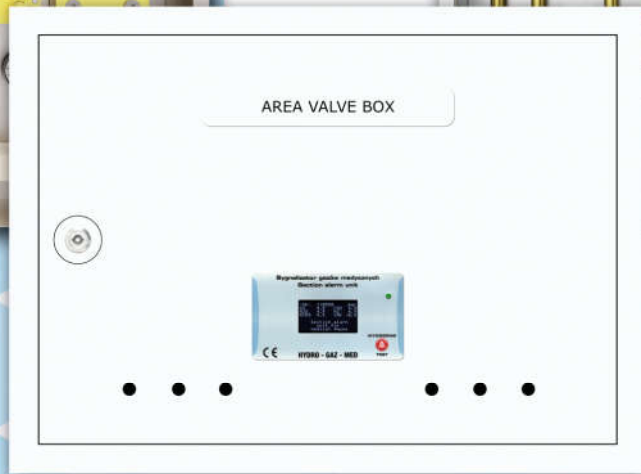


SZI-6



SZI-5-OP

for Operating theatres



SZI-3



Section alarm unit

LED indicator:
● OK state
● alarm

Test / mute button

Area valve boxes "SZI"

Main function of valve box is to shut-off and to monitor pressure of medical gases and vacuum in wards, operating theatres, intensive care units.

Basic parameters :

- ▶ from 1 up to 6 gases in one box
- ▶ shut-off valves for each gas and vacuum
- ▶ shut-off valves for ceiling pendants (SZI-OP version)
- ▶ pressure sensors for each medium
- ▶ gauge for each gas
- ▶ physical separation
- ▶ drainage
- ▶ emergency supply point type NIST/DIN/AGA
- ▶ alarm unit with LCD display
- ▶ max pipe diameter for vacuum is 28 mm
- ▶ connection to BMS and MODBUS RTU

Technical data:

Housing made from zinc plated steel, standard color for cover is RAL 9010, equipped in emergency opening, emergency supply point, sensors, ball valves, inlet / outlet from top, from 1 up to 6 gases in single housing.

Pressure: compressed gases 0 - 10 bar (145 psi)
vacuum 0 - -0.9 bar (-13 psi)

Alarms: compressed gases 5 bar ▶ low pressure 4 bar (58 psi)
▶ high pressure 6 bar (87 psi)
compressed gases 8 bar ▶ low pressure 6,5 bar (94 psi)
▶ high pressure 9,5 bar (137 psi)
vacuum ▶ pressure -0,4 bar (-5.8 psi)

Class IIb medical device.

Available valve boxes:

TYPE	Weight	Dimensions (LxWxH)
SZI-1	5,5kg	350x90x460
SZI-2	6,1kg	350x90x460
SZI-3	7,3kg	350x90x460
SZI-4	10,5kg	350x90x460
SZI-5	14,2kg	560x90x480
SZI-6	15,4kg	560x90x480