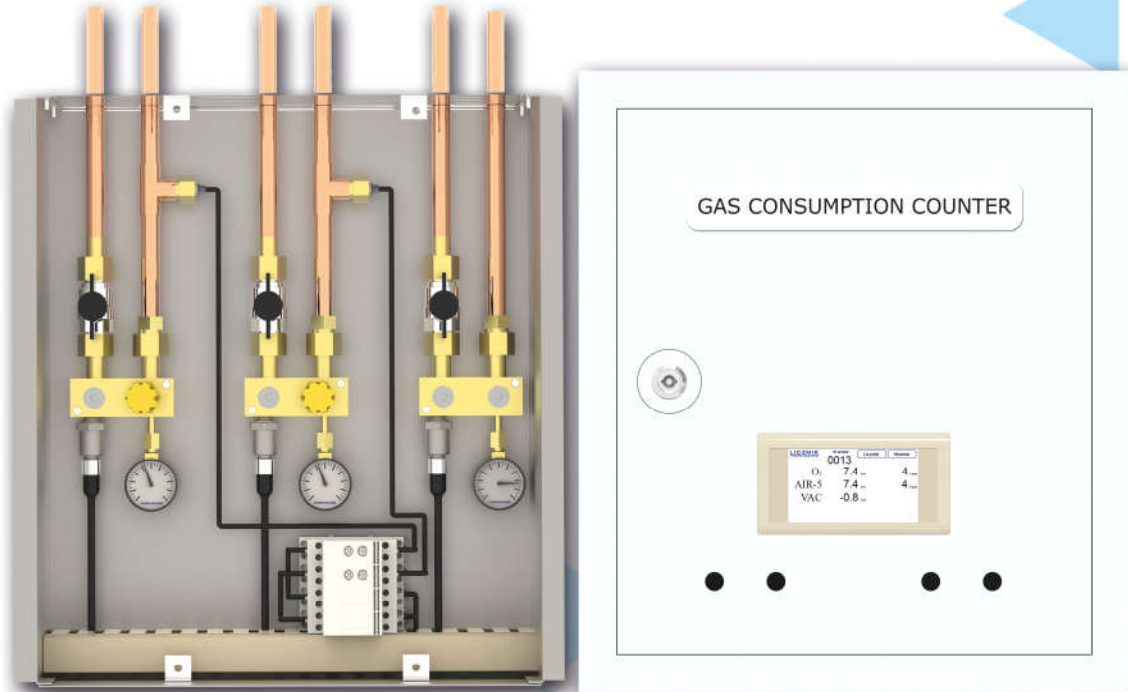


# Area valve box with flow meter "SZI-P"



|                  |         | History                                 |                        | Total |  |
|------------------|---------|---|------------------------|-------|--|
|                  |         | Actual flow                             |                        |       |  |
| O <sub>2</sub>   | 2.5 bar | 25                                      | $\frac{1}{\text{min}}$ |       |  |
| N <sub>2</sub> O | 3.0 bar | 5                                       | $\frac{1}{\text{min}}$ |       |  |
| AIR              | 1.9 bar | 18                                      | $\frac{1}{\text{min}}$ |       |  |
|                  |         | <b>O<sub>2</sub> N<sub>2</sub>O AIR</b> |                        |       |  |

|         |                               | Monthly consumption             |                    |  | ESC |
|---------|-------------------------------|---------------------------------|--------------------|--|-----|
| Months  | O <sub>2</sub> m <sup>3</sup> | N <sub>2</sub> O m <sup>3</sup> | AIR m <sup>3</sup> |  |     |
| Present | 10                            | 6                               | 54                 |  |     |
| 1 back  | 489                           | 216                             | 498                |  |     |
| 2 back  | 854                           | 155                             | 687                |  |     |
| 3 back  | 649                           | 300                             | 896                |  |     |
| 4 back  | 749                           | 269                             | 926                |  |     |
| 5 back  | 677                           | 198                             | 987                |  |     |

## Function

Designed to monitor pressure and flow rate of medical gases. It can sum total usage of gas from the first start up, also has history for last 6 months and every month is displayed separately.

## Technical data:

|                                  |  |
|----------------------------------|--|
| Type:                            | SZI-P                                  |
| Working pressure:                | compressed gases 0 - 8 bar (0-116 psi) |
| Dimensions:                      | 350x460x90 (WxHxD)                     |
| Power supply:                    | 12V DC, 0.5A                           |
| Connection to BMS and MODBUS RTU |  |

## Standard measuring ranges:

1. 0-100 l/min
2. 0-200 l/min
3. 0-500 l/min
4. Other upon request

Class IIb medical device.